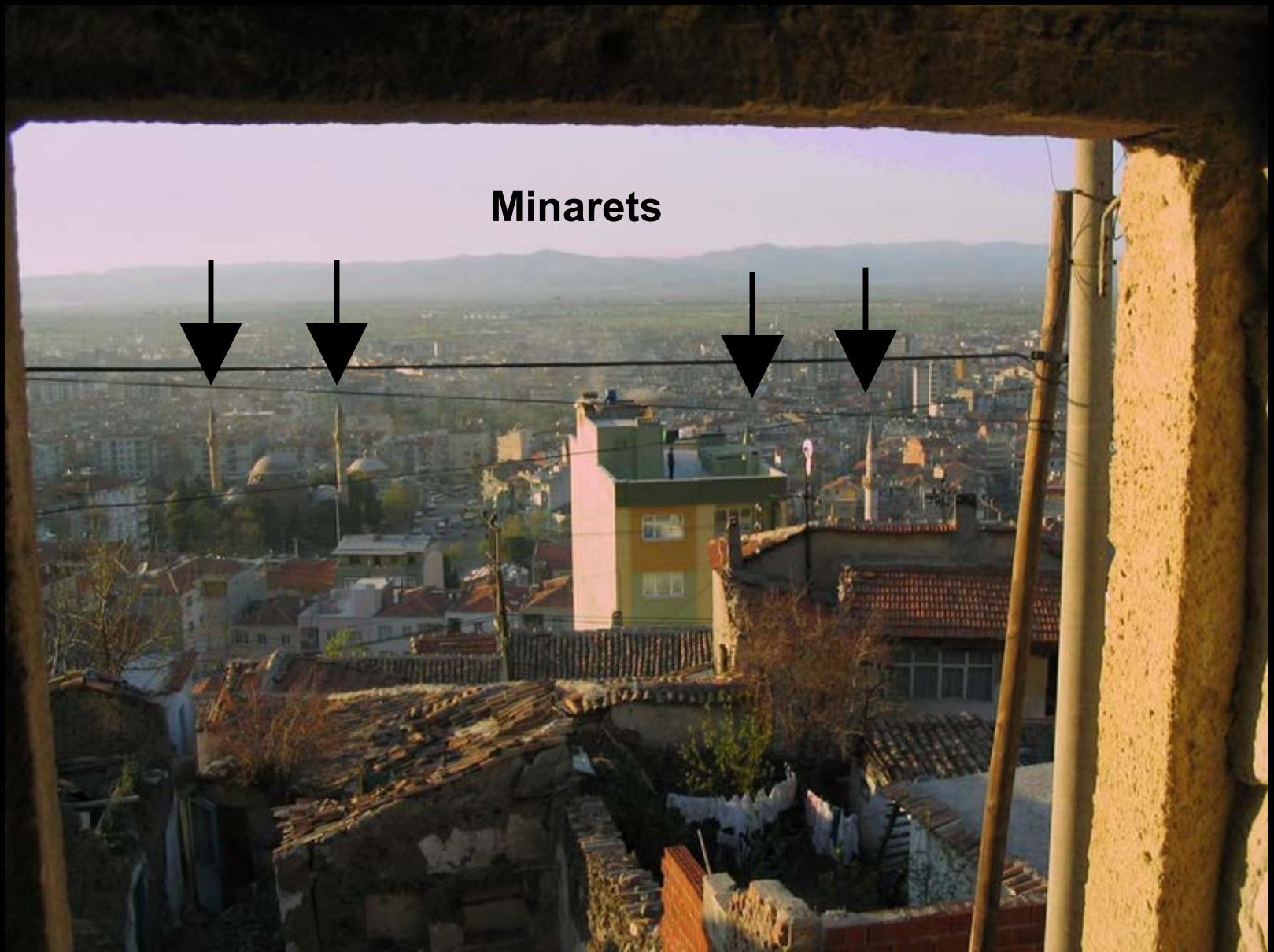


# ***View From Your Window***

**January 14, 2012**

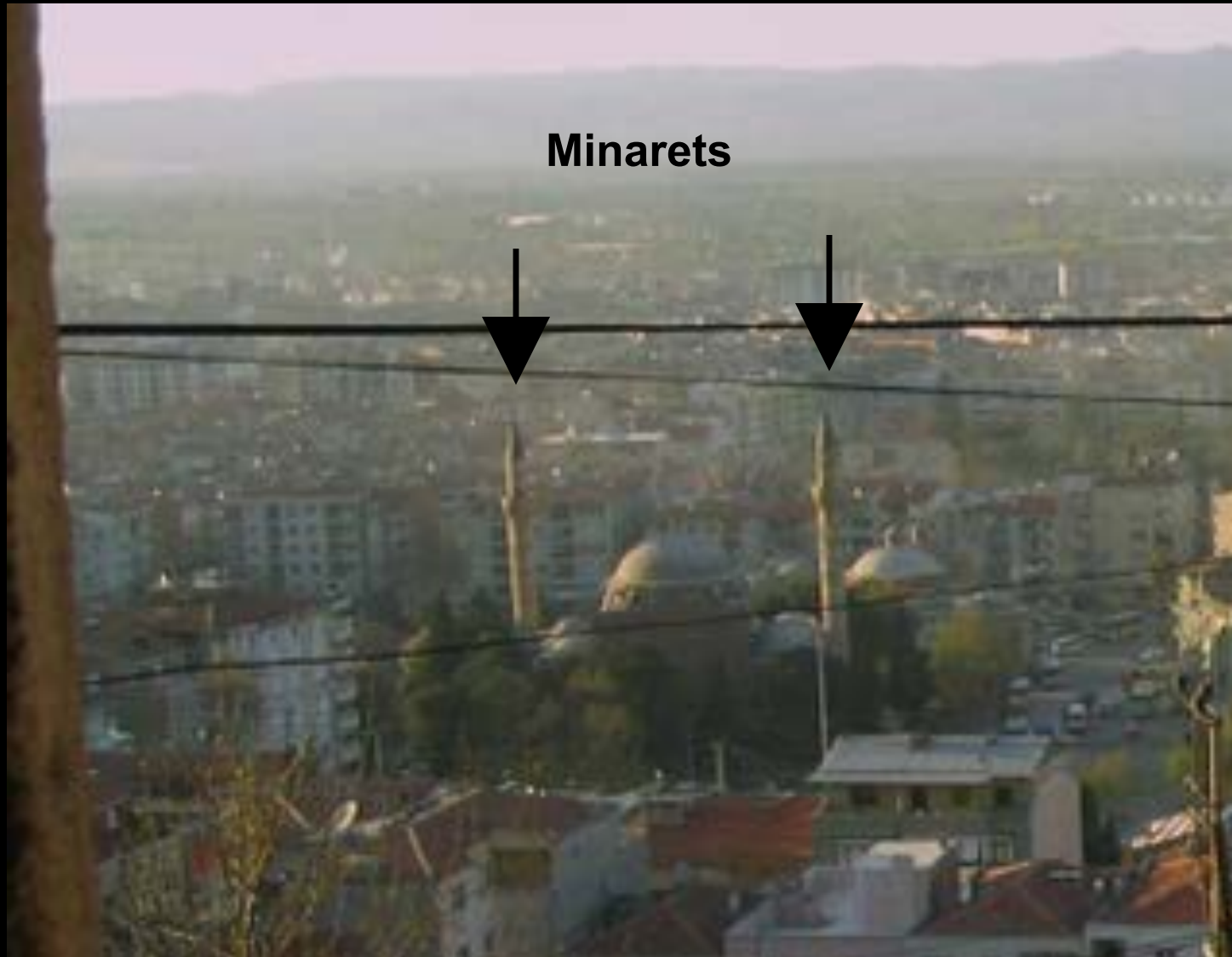


The noteworthy features in this image are the mountain range as well as the minarets. Since the architecture is more distinctive than the mountains, it will guide this investigation.





Some architectural historians have characterized these towers as candle-snuffer minarets, on account of the form of the conical roof.

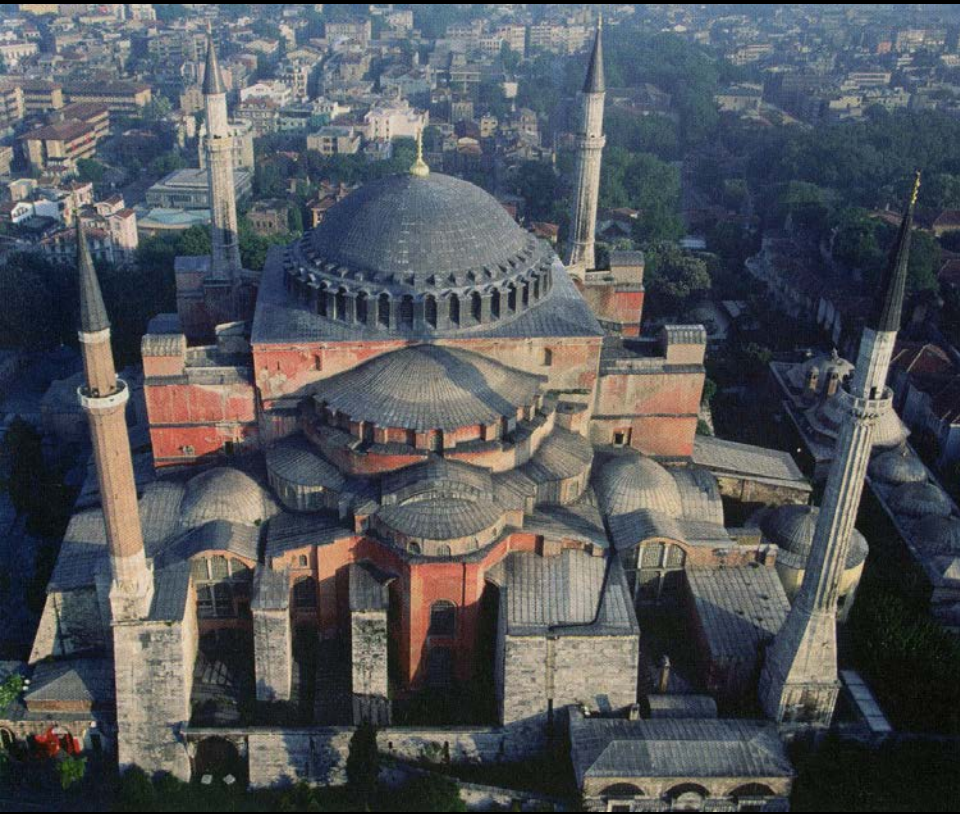


The most famous candle-snuffer minarets are those added in the fifteenth and sixteenth centuries to Hagia Sophia, Istanbul (Turkey). This site was the greatest mosque of the Ottoman Empire.

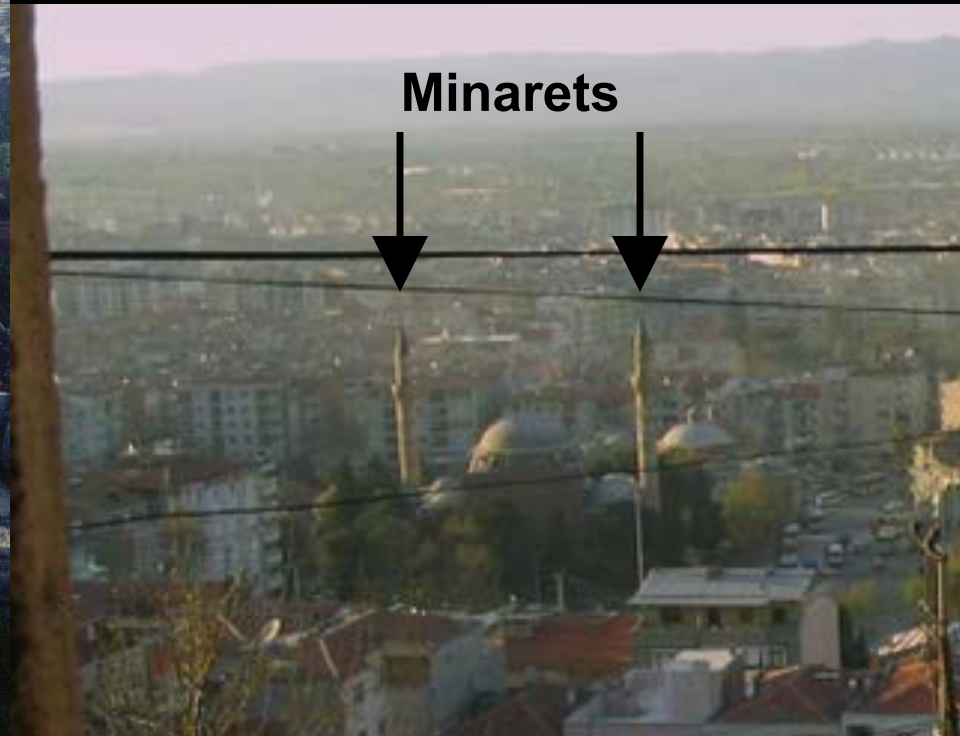




To identify the origin of this window view, the solution would require locating the correct Ottoman-era building.



Hagia Sophia, Istanbul (Turkey).

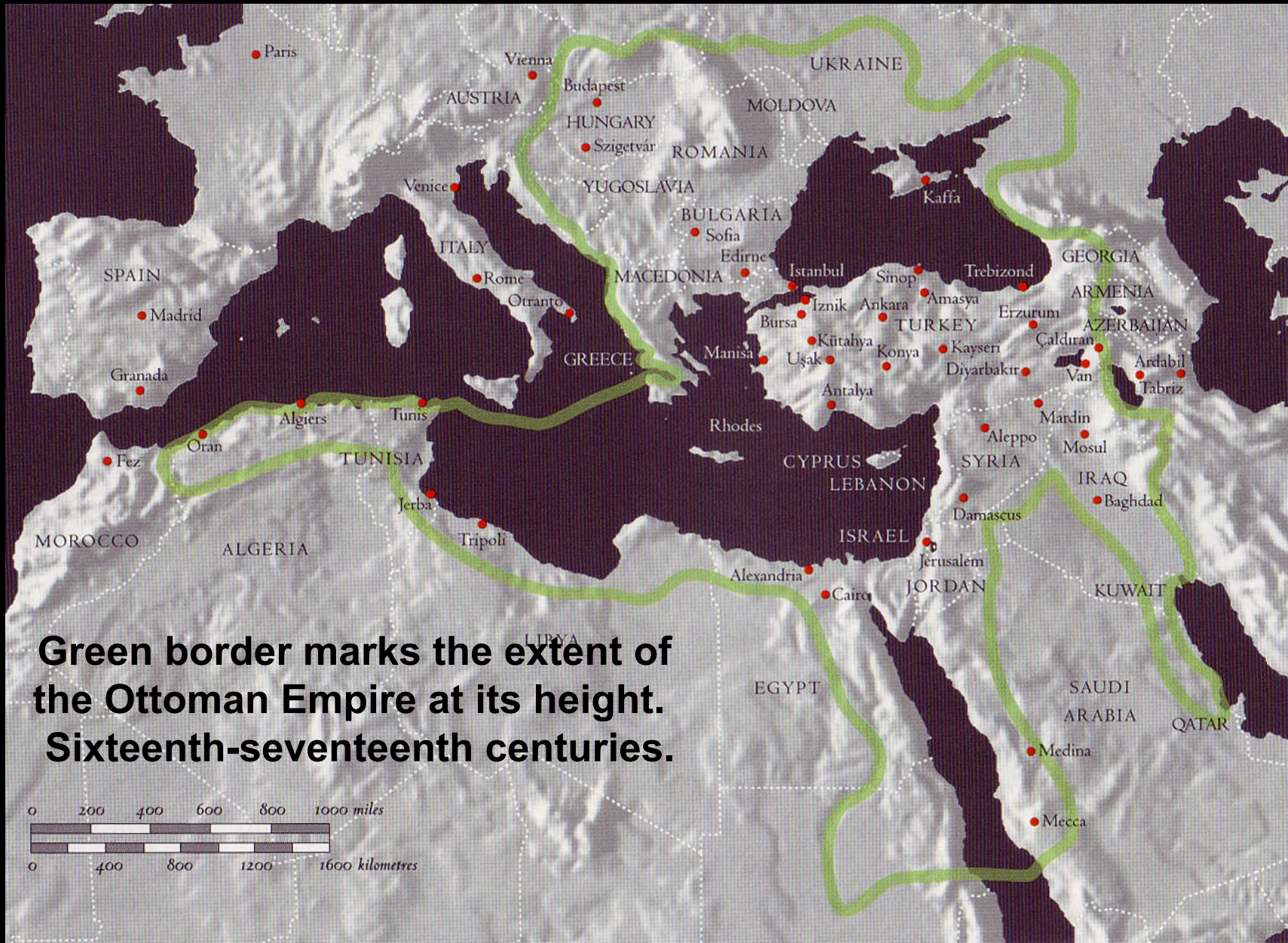


View From Your Window,  
January 14, 2012.



Unfortunately, the Ottoman Empire is pretty darn big.

Moreover, the Ottoman rulers lasted about six hundred years.



After cursory searching for the right Ottoman-era minarets in...

*Istanbul*

*Mainland Greece*

*Crete*

*Bulgaria*

*Albania*

*Bosnia and Herzegovina*

and

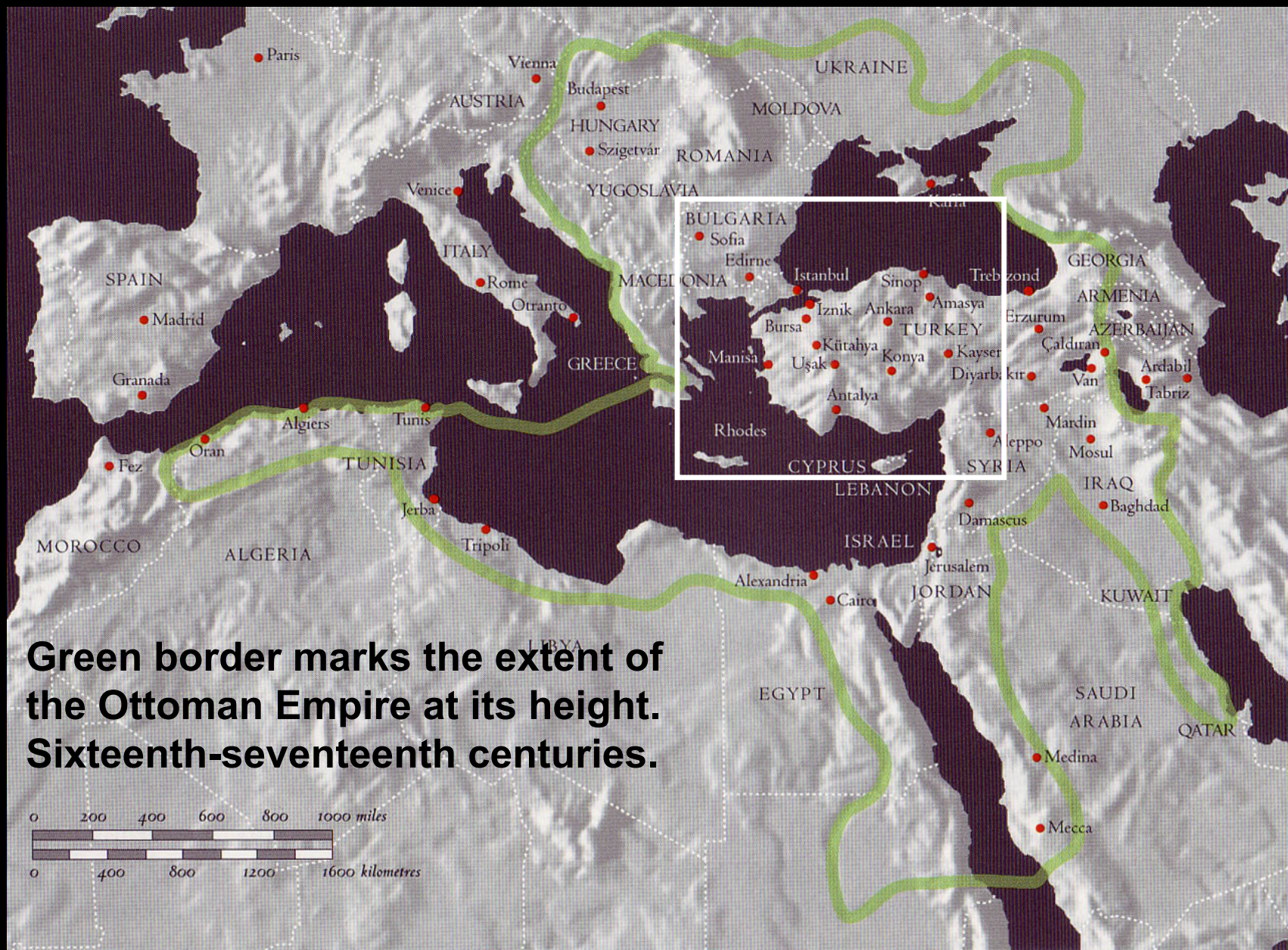
*the Republic of Macedonia*

...I finally narrowed the list of candidates.

Let's go back to that map of the Ottoman Empire.



My goal was to stay in the neighborhood of Istanbul, on the theory that the Hagia Sophia-like minarets would be in the region.





Some minarets in Konya came to look like a prospective match.



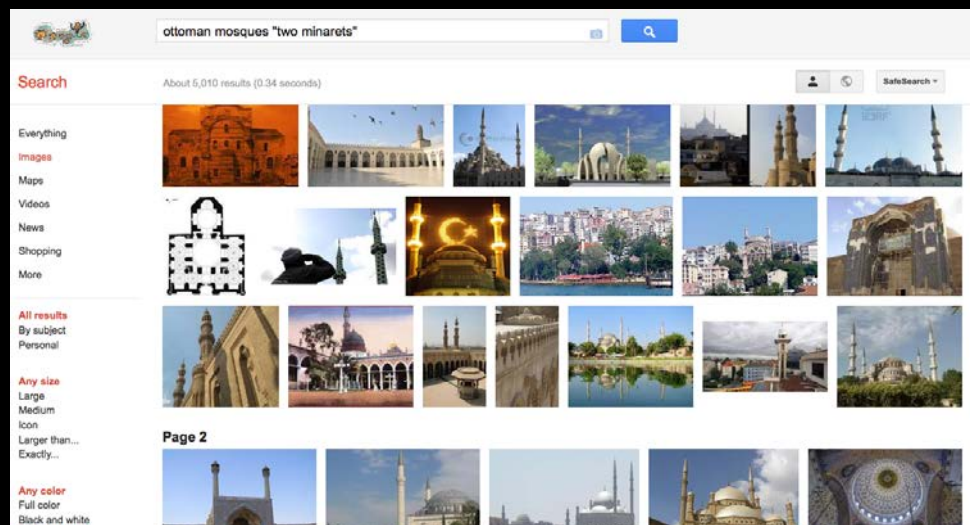
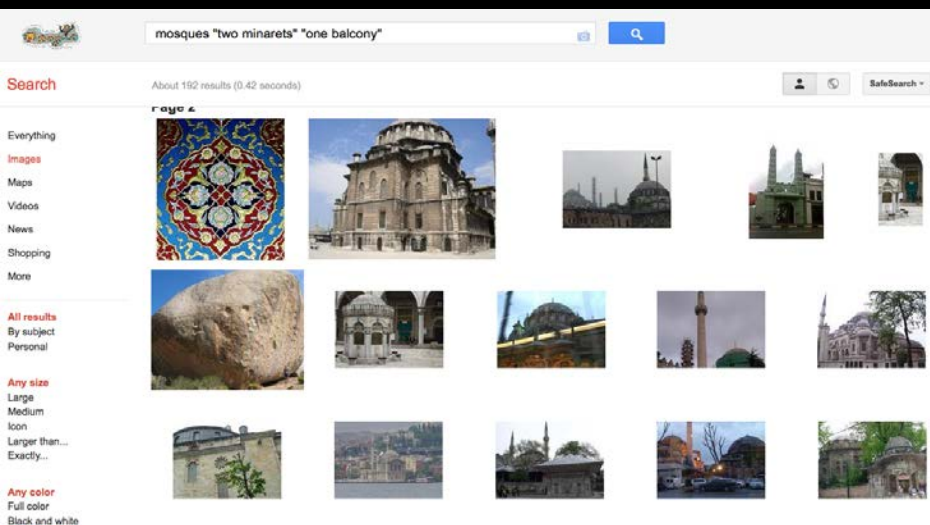
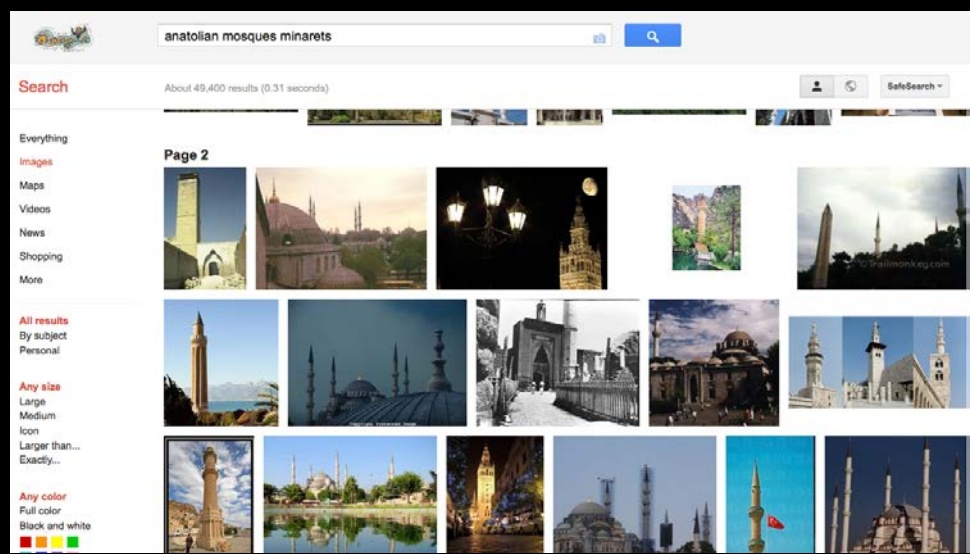
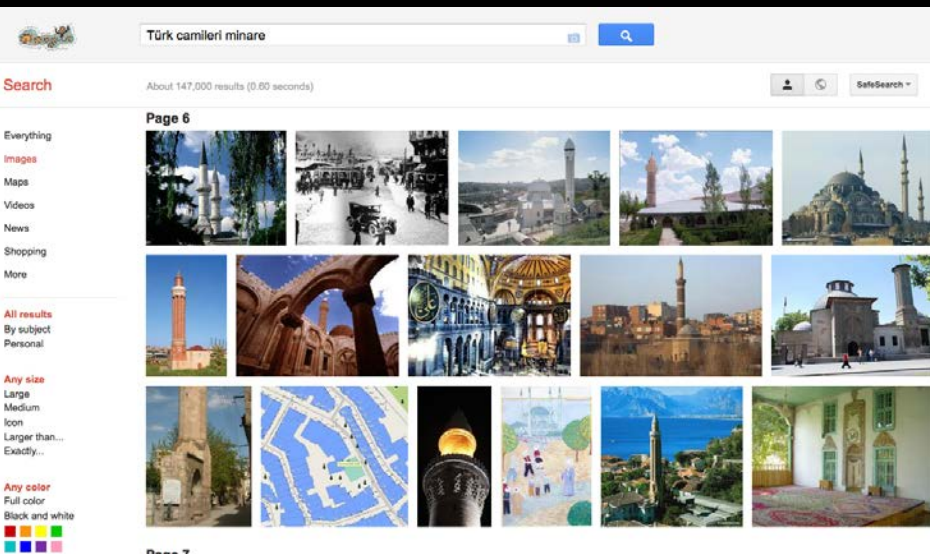
The minarets and domes of this building, the Selimiye Mosque in Konya, resemble those in the image of January 14, 2012. Despite my wishful thinking, it became evident that the site was incorrect.

(Source: <http://www.citypictures.org/r874.search.htm>)





So I did many hours of Google image searching for Anatolian mosques. I looked sad and pathetic while reviewing and discarding candidates. Fortunately, no one was around to see me.



Finally, one of the cities on this map seemed to offer me an option.

Let's look at Manisa.





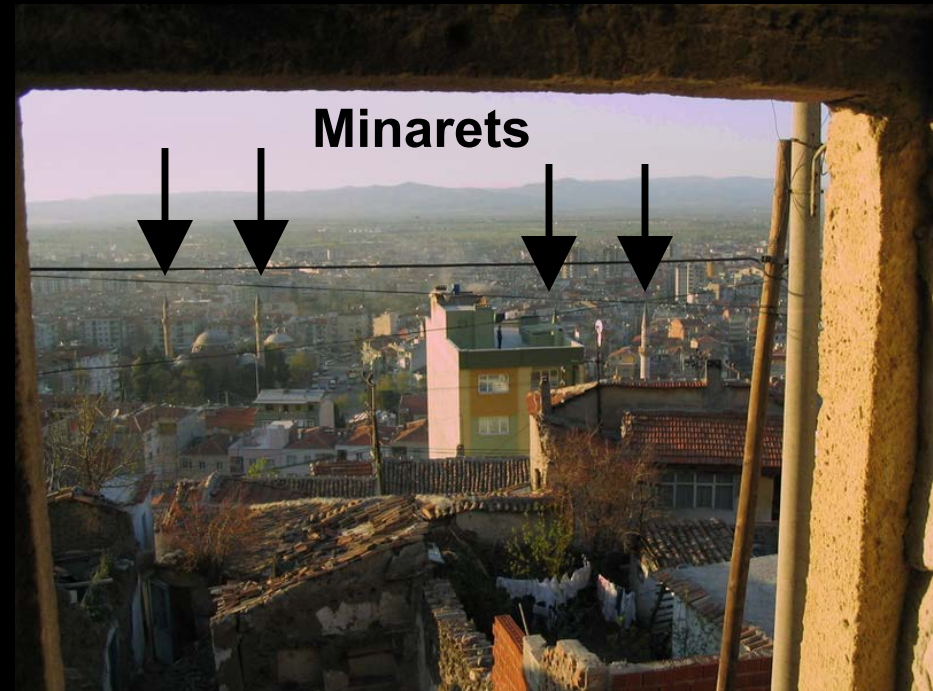
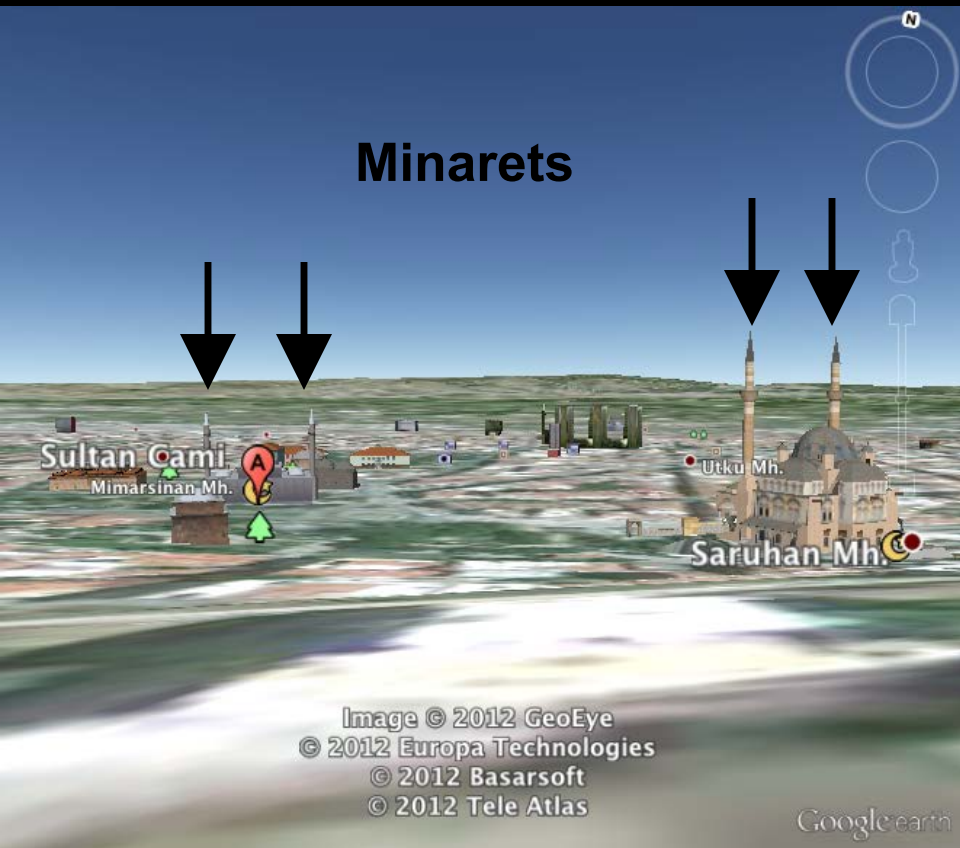
Manisa seems to offer at least one building that matches the mosque on the left of the “View From Your Window.”



Sultan Mosque, Manisa (Turkey). Source:  
<http://www.panoramio.com/photo/6848408>

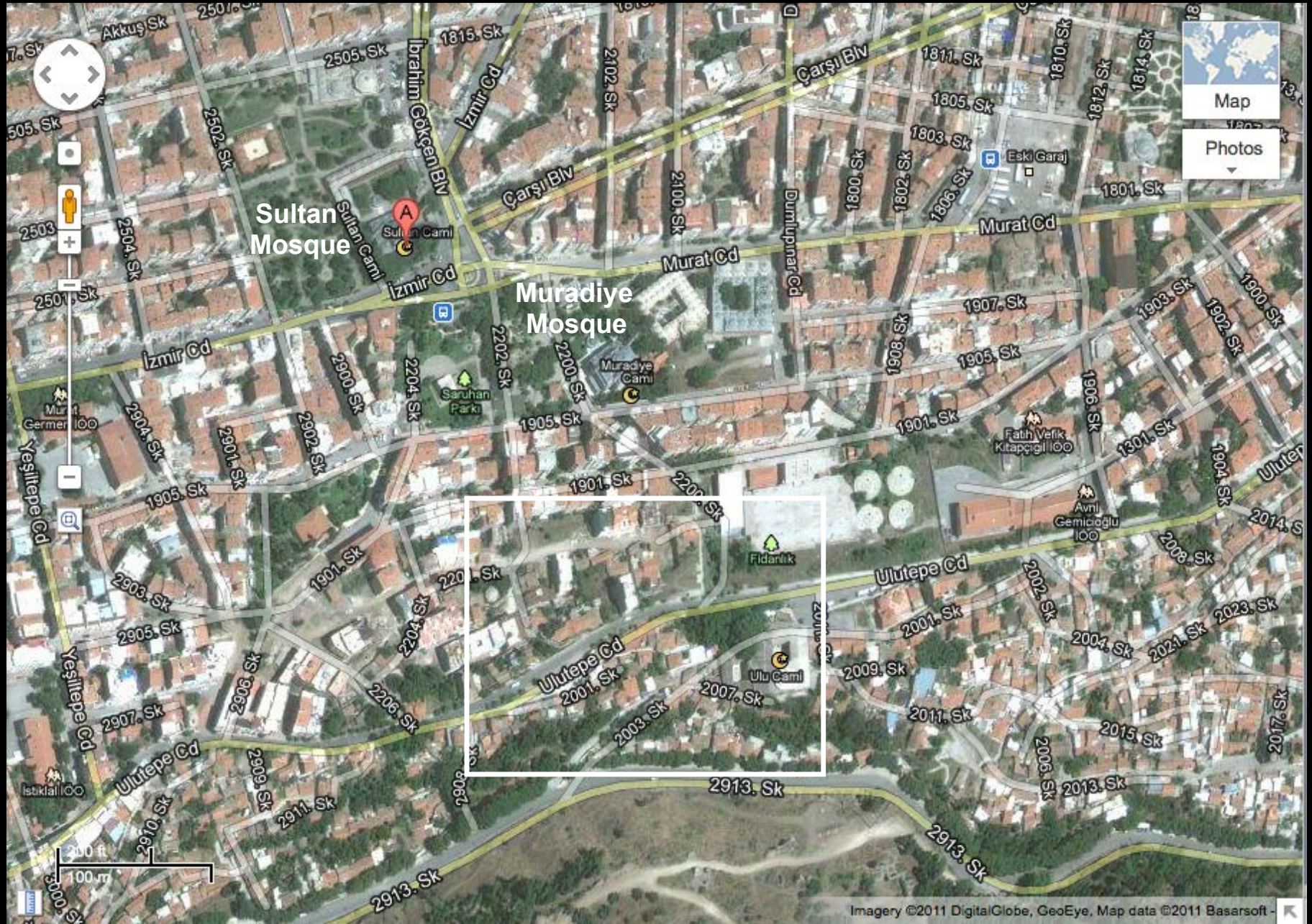


Moreover, Manisa seems to have two mosques, each with its pair of minarets.  
It looks like a solution is in sight.



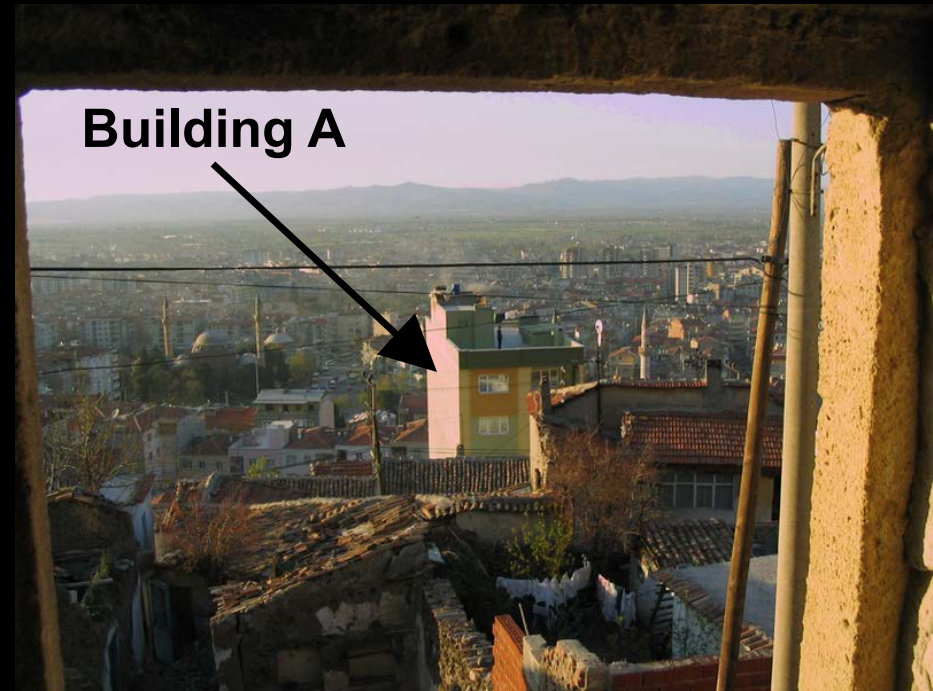


The window is somewhere south of the Sultan Mosque and the Muradiye Mosque in Manisa.





The structure that I'll describe as Building A will be my reference point as I narrow down the window.





There is also a white surface that will help me narrow down the source of the view.



**White surface**

To the south of the white surface is a building with a brown circle. That building must be the source of the *View From Your Window*.



**Brown building  
with circular  
feature**



The candidate for this building, apparently known as the Darphane, has a circular roof and looks to be in a state of disrepair. That might explain why the *View From Your Window* does not appear to be from within a comfortable residential site.

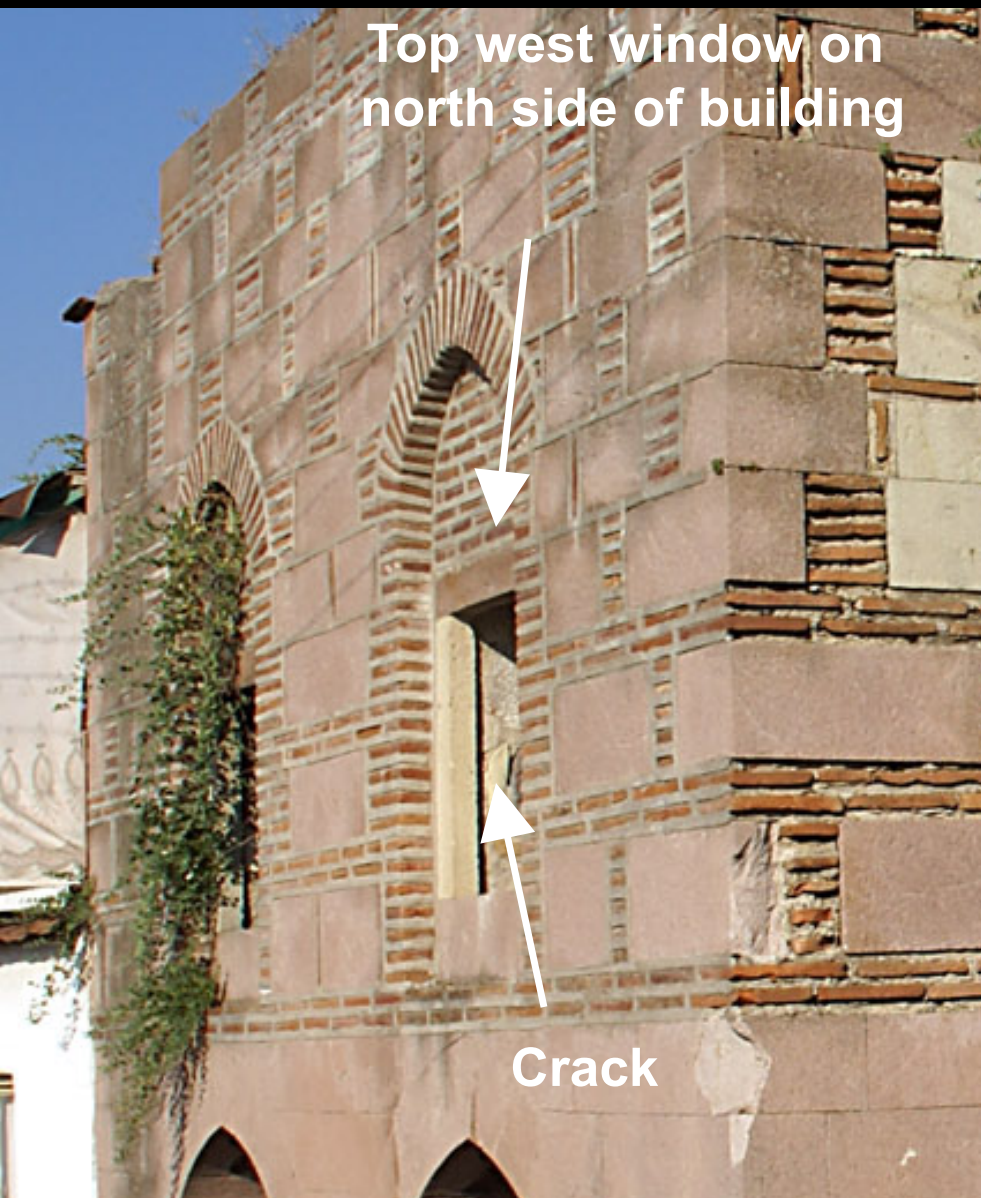
Now I have to figure out which upper window is the source of the view.



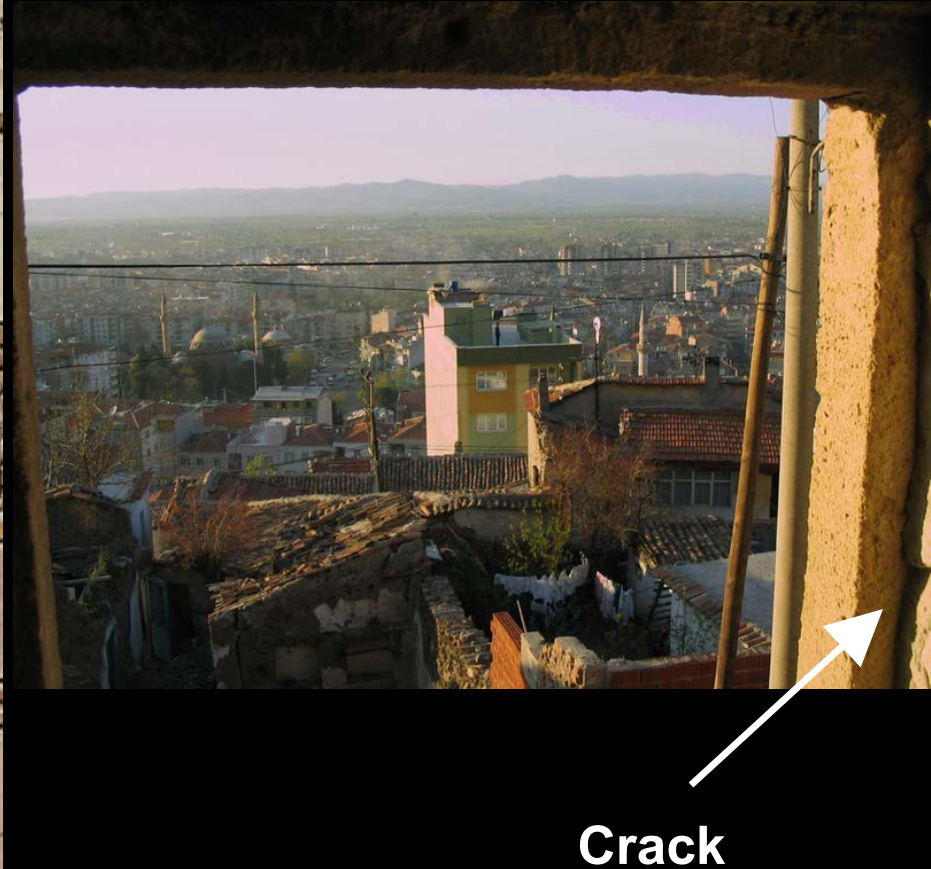
Source:

<http://www.panoramio.com/photo/55558160>





My guess is that the cracks shown here would serve as the basis for identifying the source of the *View From Your Window*.



Source (image has been cropped in this view):

<http://www.panoramio.com/photo/55558160>



Moreover, the wear on the frame appears in another photo.



**Wear**

Source (image has been cropped in this PDF file):

<http://www.flickr.com/photos/drencrome/6637685289/sizes/o/in/photostream/>





The view is from the top west window on the north side of the Darphane in Manisa, Turkey.



*(This took way more time than I had on my hands.)*